





RODILEGNO ROSSO

(*Cossus cossus*)

1. classificazione e ospiti 
2. danni 
3. ciclo biologico (con immagini) 
4. lotta 

CLASSIFICAZIONE e OSPITI

Classificazione

ordine	Lepidotteri
famiglia	Cossidae
alimentazione	larve xilofaghe

Ospiti

principali	arboree frutto e legno
secondari	alcune erbacee (carciofo, barbabietola)

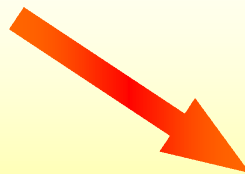


DANNI

Larve **xilofaghe** sono altamente **polifaghe**

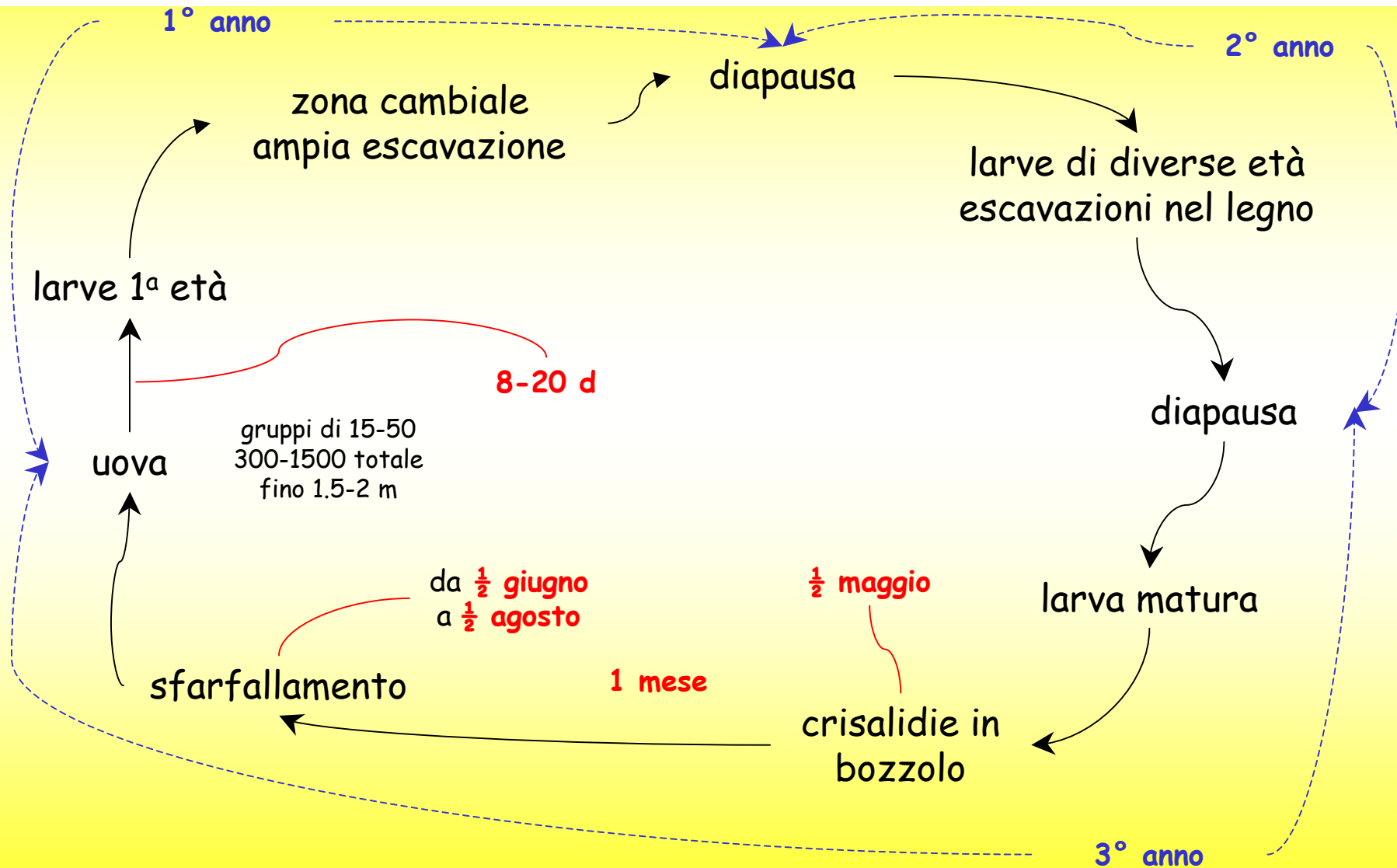
Le larve attaccano p.te precarie condizioni, prima in zona sottocorticale poi approfondendosi nel legno:

zona del colletto
tronco
grosse branche



interrompono flusso linfa
deperimento vegetativo
disseccamento branche
ridotta resistenza meccanica

CICLO BIOLOGICO (1 gen in 3 anni)



Uova di *C. cossus*

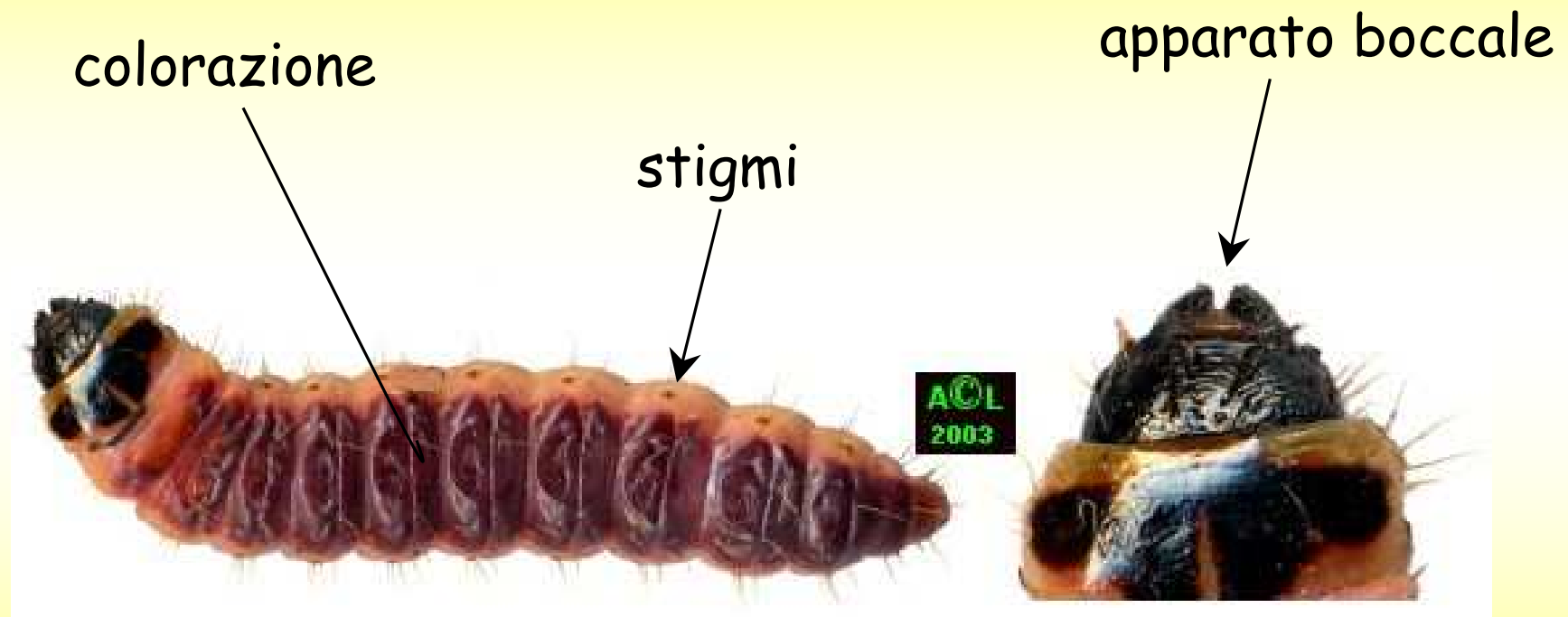


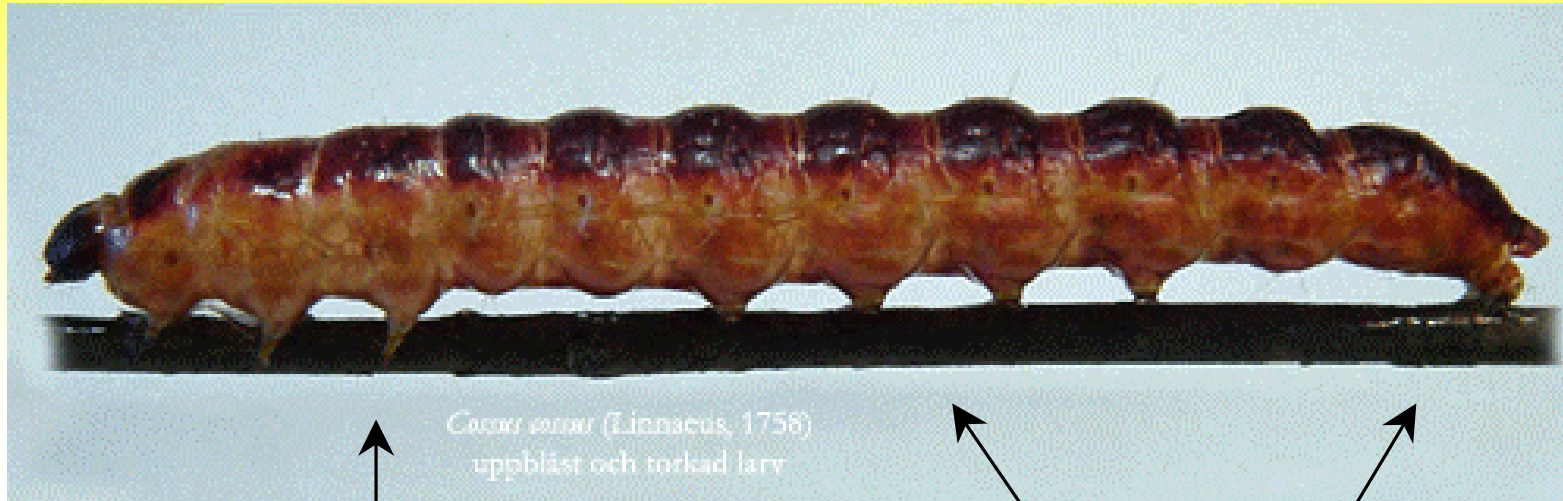
Larve 1^a età
di *C. cossus*

Larva matura di *C. cossus* - dimensioni



Larva di *C. cossus*





Cossus cossus (Linnaeus, 1758)
uppbläst och torkad larrv

zampe

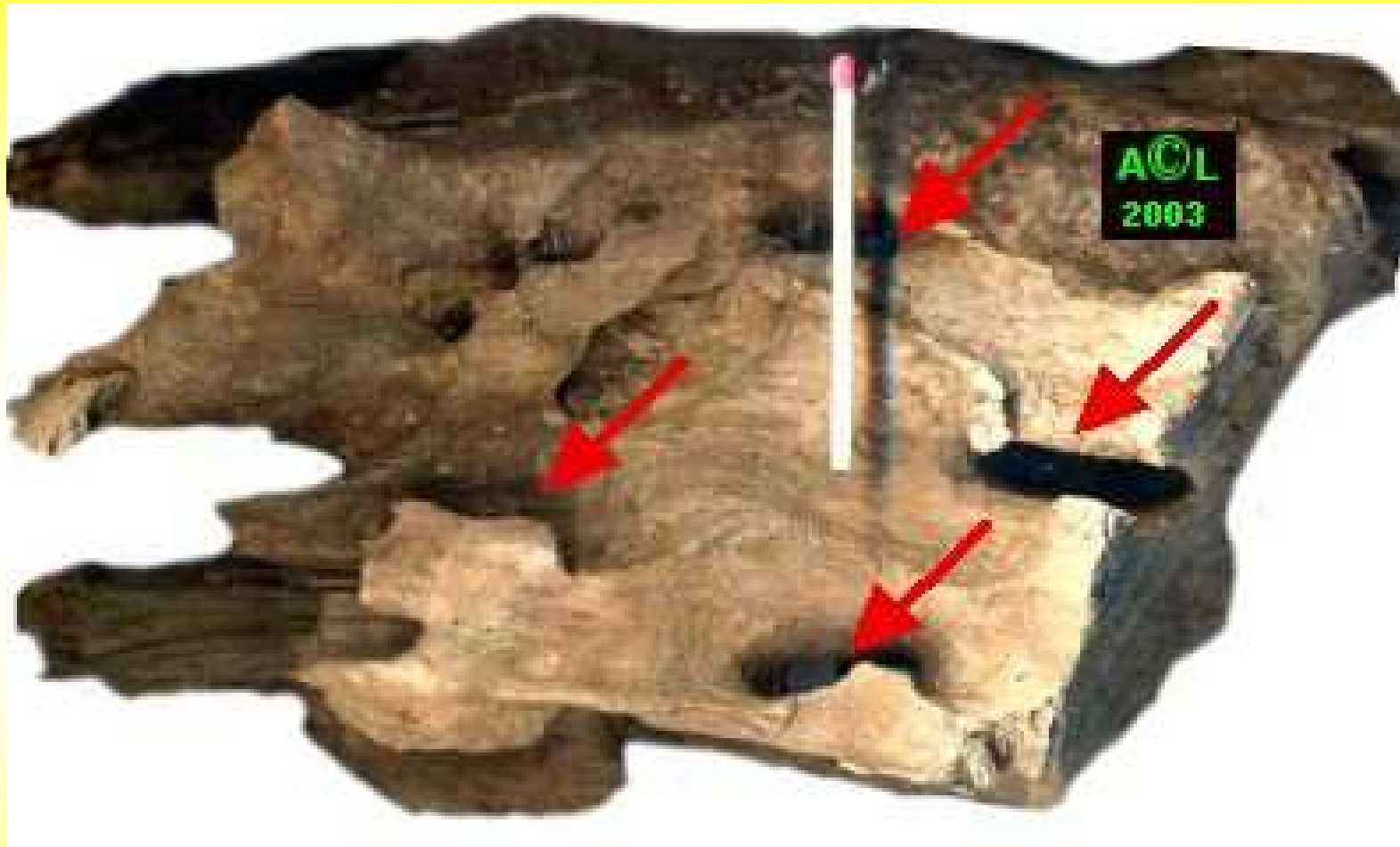
pseudozampe





UGA1231235







rosura







ACL
2003

